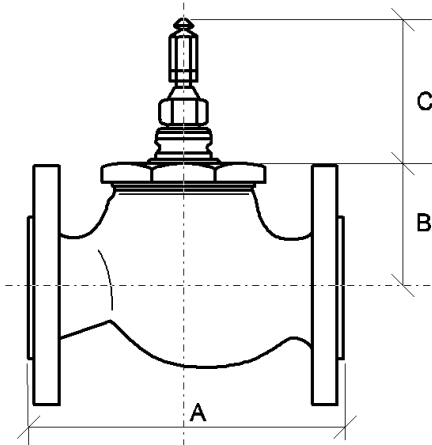


- Globe type two-way control valve
- Cast iron or ductile iron body with flanged end connections
- Stainless steel trim
- Very low leakage rate
- Direct acting, stem down closes
- No stroke adjustment


Product codes

Model	Valve size	Kvs
VGf2-16-15	ND15 1/2"	4.0
VGf2-16-20	ND20 3/4"	6.3
VGf2-16-25	ND25 1"	10
VGf2-16-32	ND32 1 1/4"	16
VGf2-16-40	ND40 1 1/2"	25
VGf2-16-50	ND50 2"	40
VGf2-16-65	ND65 2 1/2"	63
VGf2-16-80	ND80 3"	100

Dimensions


	A (mm)	B (mm)	Weight (kg)
ND15	130	55	3
ND20	150	55	4
ND25	160	55	5
ND32	180	55	7
ND40	200	81	10
ND50	230	81	14
ND65	290	81	15
ND80	310	83	20

Trim down (Valve closed) C=89 mm

Trim up (Valve open) C=109 mm

Specifications

Nominal Pressure Rating	PN 16
Body End Connections	Flanged (suitable to DIN norms)
Flow Characteristic	Equal percentage
Rangeability	50:1
Leakage Rate	<0.05% of kVS
Stroke	20 mm
Valve Body Material	Cast iron
Trim	Stainless steel
Seat	Stainless steel, Non-removable
Packing	Spring loaded PTFE cone rings
Max. Medium Temperature and Pressure	between 2-120°C, 16 Bar between 120-170°C, 14 Bar
Min. Medium Temperature	2 °C

Close off rating (Bar)

		15	20	25	32	40	50	65	80
NV serisi	800 N	10	10	10	6.0	3.5	2.0	1.2	0.5
NVG serisi	1'600 N	16	16	16	14	11	7.0	4.0	2.0
MVS 20 N serisi	1'800N	16	16	16	16	13	7.5	4.7	2.3
MVG 20 Y serisi	4'500 N	16	16	16	16	16	16	13	7.0
MVG 20 N serisi	12'500 N	16	16	16	16	16	16	16	16